

## ELECTRIC BASS



6 7 8 9 10

[illegible]

Musical notation for the bass line of 'The Rose Tree'. The staff is in bass clef with a key signature of one flat (B-flat). The melody consists of eighth and quarter notes. The notes are: G2 (17), A2 (18), Bb2 (19), C3 (20), D3 (21), E3 (22), F3 (23), G3 (24), A3 (25), Bb3 (26), C4 (27), D4 (28), E4 (29), F4 (30), G4 (31), A4 (32), Bb4 (33), C5 (34), D5 (35), E5 (36), F5 (37), G5 (38), A5 (39), Bb5 (40), C6 (41), D6 (42), E6 (43), F6 (44), G6 (45), A6 (46), Bb6 (47), C7 (48), D7 (49), E7 (50), F7 (51), G7 (52), A7 (53), Bb7 (54), C8 (55), D8 (56), E8 (57), F8 (58), G8 (59), A8 (60), Bb8 (61), C9 (62), D9 (63), E9 (64), F9 (65), G9 (66), A9 (67), Bb9 (68), C10 (69), D10 (70), E10 (71), F10 (72), G10 (73), A10 (74), Bb10 (75), C11 (76), D11 (77), E11 (78), F11 (79), G11 (80), A11 (81), Bb11 (82), C12 (83), D12 (84), E12 (85), F12 (86), G12 (87), A12 (88), Bb12 (89), C13 (90), D13 (91), E13 (92), F13 (93), G13 (94), A13 (95), Bb13 (96), C14 (97), D14 (98), E14 (99), F14 (100), G14 (101), A14 (102), Bb14 (103), C15 (104), D15 (105), E15 (106), F15 (107), G15 (108), A15 (109), Bb15 (110), C16 (111), D16 (112), E16 (113), F16 (114), G16 (115), A16 (116), Bb16 (117), C17 (118), D17 (119), E17 (120), F17 (121), G17 (122), A17 (123), Bb17 (124), C18 (125), D18 (126), E18 (127), F18 (128), G18 (129), A18 (130), Bb18 (131), C19 (132), D19 (133), E19 (134), F19 (135), G19 (136), A19 (137), Bb19 (138), C20 (139), D20 (140), E20 (141), F20 (142), G20 (143), A20 (144), Bb20 (145), C21 (146), D21 (147), E21 (148), F21 (149), G21 (150), A21 (151), Bb21 (152), C22 (153), D22 (154), E22 (155), F22 (156), G22 (157), A22 (158), Bb22 (159), C23 (160), D23 (161), E23 (162), F23 (163), G23 (164), A23 (165), Bb23 (166), C24 (167), D24 (168), E24 (169), F24 (170), G24 (171), A24 (172), Bb24 (173), C25 (174), D25 (175), E25 (176), F25 (177), G25 (178), A25 (179), Bb25 (180), C26 (181), D26 (182), E26 (183), F26 (184), G26 (185), A26 (186), Bb26 (187), C27 (188), D27 (189), E27 (190), F27 (191), G27 (192), A27 (193), Bb27 (194), C28 (195), D28 (196), E28 (197), F28 (198), G28 (199), A28 (200), Bb28 (201), C29 (202), D29 (203), E29 (204), F29 (205), G29 (206), A29 (207), Bb29 (208), C30 (209), D30 (210), E30 (211), F30 (212), G30 (213), A30 (214), Bb30 (215), C31 (216), D31 (217), E31 (218), F31 (219), G31 (220), A31 (221), Bb31 (222), C32 (223), D32 (224), E32 (225), F32 (226), G32 (227), A32 (228), Bb32 (229), C33 (230), D33 (231), E33 (232), F33 (233), G33 (234), A33 (235), Bb33 (236), C34 (237), D34 (238), E34 (239), F34 (240), G34 (241), A34 (242), Bb34 (243), C35 (244), D35 (245), E35 (246), F35 (247), G35 (248), A35 (249), Bb35 (250), C36 (251), D36 (252), E36 (253), F36 (254), G36 (255), A36 (256), Bb36 (257), C37 (258), D37 (259), E37 (260), F37 (261), G37 (262), A37 (263), Bb37 (264), C38 (265), D38 (266), E38 (267), F38 (268), G38 (269), A38 (270), Bb38 (271), C39 (272), D39 (273), E39 (274), F39 (275), G39 (276), A39 (277), Bb39 (278), C40 (279), D40 (280), E40 (281), F40 (282), G40 (283), A40 (284), Bb40 (285), C41 (286), D41 (287), E41 (288), F41 (289), G41 (290), A41 (291), Bb41 (292), C42 (293), D42 (294), E42 (295), F42 (296), G42 (297), A42 (298), Bb42 (299), C43 (300), D43 (301), E43 (302), F43 (303), G43 (304), A43 (305), Bb43 (306), C44 (307), D44 (308), E44 (309), F44 (310), G44 (311), A44 (312), Bb44 (313), C45 (314), D45 (315), E45 (316), F45 (317), G45 (318), A45 (319), Bb45 (320), C46 (321), D46 (322), E46 (323), F46 (324), G46 (325), A46 (326), Bb46 (327), C47 (328), D47 (329), E47 (330), F47 (331), G47 (332), A47 (333), Bb47 (334), C48 (335), D48 (336), E48 (337), F48 (338), G48 (339), A48 (340), Bb48 (341), C49 (342), D49 (343), E49 (344), F49 (345), G49 (346), A49 (347), Bb49 (348), C50 (349), D50 (350), E50 (351), F50 (352), G50 (353), A50 (354), Bb50 (355), C51 (356), D51 (357), E51 (358), F51 (359), G51 (360), A51 (361), Bb51 (362), C52 (363), D52 (364), E52 (365), F52 (366), G52 (367), A52 (368), Bb52 (369), C53 (370), D53 (371), E53 (372), F53 (373), G53 (374), A53 (375), Bb53 (376), C54 (377), D54 (378), E54 (379), F54 (380), G54 (381), A54 (382), Bb54 (383), C55 (384), D55 (385), E55 (386), F55 (387), G55 (388), A55 (389), Bb55 (390), C56 (391), D56 (392), E56 (393), F56 (394), G56 (395), A56 (396), Bb56 (397), C57 (398), D57 (399), E57 (400), F57 (401), G57 (402), A57 (403), Bb57 (404), C58 (405), D58 (406), E58 (407), F58 (408), G58 (409), A58 (410), Bb58 (411), C59 (412), D59 (413), E59 (414), F59 (415), G59 (416), A59 (417), Bb59 (418), C60 (419), D60 (420), E60 (421), F60 (422), G60 (423), A60 (424), Bb60 (425), C61 (426), D61 (427), E61 (428), F61 (429), G61 (430), A61 (431), Bb61 (432), C62 (433), D62 (434), E62 (435), F62 (436), G62 (437), A62 (438), Bb62 (439), C63 (440), D63 (441), E63 (442), F63 (443), G63 (444), A63 (445), Bb63 (446), C64 (447), D64 (448), E64 (449), F64 (450), G64 (451), A64 (452), Bb64 (453), C65 (454), D65 (455), E65 (456), F65 (457), G65 (458), A65 (459), Bb65 (460), C66 (461), D66 (462), E66 (463), F66 (464), G66 (465), A66 (466), Bb66 (467), C67 (468), D67 (469), E67 (470), F67 (471), G67 (472), A67 (473), Bb67 (474), C68 (475), D68 (476), E68 (477), F68 (478), G68 (479), A68 (480), Bb68 (481), C69 (482), D69 (483), E69 (484), F69 (485), G69 (486), A69 (487), Bb69 (488), C70 (489), D70 (490), E70 (491), F70 (492), G70 (493), A70 (494), Bb70 (495), C71 (496), D71 (497), E71 (498), F71 (499), G71 (500), A71 (501), Bb71 (502), C72 (503), D72 (504), E72 (505), F72 (506), G72 (507), A72 (508), Bb72 (509), C73 (510), D73 (511), E73 (512), F73 (513), G73 (514), A73 (515), Bb73 (516), C74 (517), D74 (518), E74 (519), F74 (520), G74 (521), A74 (522), Bb74 (523), C75 (524), D75 (525), E75 (526), F75 (527), G75 (5



23 24 25 26 27

23

Musical notation for measures 23-27 of 'The Rose Tree'. The notation is on a single staff with a treble clef and a key signature of one flat (B-flat). Measure 23 starts with a whole note G4. Measure 24 has a whole rest. Measure 25 has a whole note G4. Measure 26 has a whole note G4. Measure 27 has a whole note G4. The notes are G4, A4, Bb4, C5, D5, E5, F5, G5, A5, Bb5, C6, D6, E6, F6, G6, A6, Bb6, C7, D7, E7, F7, G7, A7, Bb7, C8, D8, E8, F8, G8, A8, Bb8, C9, D9, E9, F9, G9, A9, Bb9, C10, D10, E10, F10, G10, A10, Bb10, C11, D11, E11, F11, G11, A11, Bb11, C12, D12, E12, F12, G12, A12, Bb12, C13, D13, E13, F13, G13, A13, Bb13, C14, D14, E14, F14, G14, A14, Bb14, C15, D15, E15, F15, G15, A15, Bb15, C16, D16, E16, F16, G16, A16, Bb16, C17, D17, E17, F17, G17, A17, Bb17, C18, D18, E18, F18, G18, A18, Bb18, C19, D19, E19, F19, G19, A19, Bb19, C20, D20, E20, F20, G20, A20, Bb20, C21, D21, E21, F21, G21, A21, Bb21, C22, D22, E22, F22, G22, A22, Bb22, C23, D23, E23, F23, G23, A23, Bb23, C24, D24, E24, F24, G24, A24, Bb24, C25, D25, E25, F25, G25, A25, Bb25, C26, D26, E26, F26, G26, A26, Bb26, C27, D27, E27, F27, G27, A27, Bb27, C28, D28, E28, F28, G28, A28, Bb28, C29, D29, E29, F29, G29, A29, Bb29, C30, D30, E30, F30, G30, A30, Bb30, C31, D31, E31, F31, G31, A31, Bb31, C32, D32, E32, F32, G32, A32, Bb32, C33, D33, E33, F33, G33, A33, Bb33, C34, D34, E34, F34, G34, A34, Bb34, C35, D35, E35, F35, G35, A35, Bb35, C36, D36, E36, F36, G36, A36, Bb36, C37, D37, E37, F37, G37, A37, Bb37, C38, D38, E38, F38, G38, A38, Bb38, C39, D39, E39, F39, G39, A39, Bb39, C40, D40, E40, F40, G40, A40, Bb40, C41, D41, E41, F41, G41, A41, Bb41, C42, D42, E42, F42, G42, A42, Bb42, C43, D43, E43, F43, G43, A43, Bb43, C44, D44, E44, F44, G44, A44, Bb44, C45, D45, E45, F45, G45, A45, Bb45, C46, D46, E46, F46, G46, A46, Bb46, C47, D47, E47, F47, G47, A47, Bb47, C48, D48, E48, F48, G48, A48, Bb48, C49, D49, E49, F49, G49, A49, Bb49, C50, D50, E50, F50, G50, A50, Bb50, C51, D51, E51, F51, G51, A51, Bb51, C52, D52, E52, F52, G52, A52, Bb52, C53, D53, E53, F53, G53, A53, Bb53, C54, D54, E54, F54, G54, A54, Bb54, C55, D55, E55, F55, G55, A55, Bb55, C56, D56, E56, F56, G56, A56, Bb56, C57, D57, E57, F57, G57, A57, Bb57, C58, D58, E58, F58, G58, A58, Bb58, C59, D59, E59, F59, G59, A59, Bb59, C60, D60, E60, F60, G60, A60, Bb60, C61, D61, E61, F61, G61, A61, Bb61, C62, D62, E62, F62, G62, A62, Bb62, C63, D63, E63, F63, G63, A63, Bb63, C64, D64, E64, F64, G64, A64, Bb64, C65, D65, E65, F65, G65, A65, Bb65, C66, D66, E66, F66, G66, A66, Bb66, C67, D67, E67, F67, G67, A67, Bb67, C68, D68, E68, F68, G68, A68, Bb68, C69, D69, E69, F69, G69, A69, Bb69, C70, D70, E70, F70, G70, A70, Bb70, C71, D71, E71, F71, G71, A71, Bb71, C72, D72, E72, F72, G72, A72, Bb72, C73, D73, E73, F73, G73, A73, Bb73, C74, D74, E74, F74, G74, A74, Bb74, C75, D75, E75, F75, G75, A75, Bb75, C76, D76, E76, F76, G76, A76, Bb76, C77, D77, E77, F77, G77, A77, Bb77, C78, D78, E78, F78, G78, A78, Bb78, C79, D79, E79, F79, G79, A79, Bb79, C80, D80, E80, F80, G80, A80, Bb80, C81, D81, E81, F81, G81, A81, Bb81, C82, D82, E82, F82, G82, A82, Bb82, C83, D83, E83, F83, G83, A83, Bb83, C84, D84, E84, F84, G84, A84, Bb84, C85, D85, E85, F85, G85, A85, Bb85, C86, D86, E86, F86, G86, A86, Bb86, C87, D87, E87, F87, G87, A87, Bb87, C88, D88, E88, F88, G88, A88, Bb88, C89, D89, E89, F89, G89, A89, Bb89, C90, D90, E90, F90, G90, A90, Bb90, C91, D91, E91, F91, G91, A91, Bb91, C92, D92, E92, F92, G92, A92, Bb92, C93, D93, E93, F93, G93, A93, Bb93, C94, D94, E94, F94, G94, A94, Bb94, C95, D95, E95, F95, G95, A95, Bb95, C96, D96, E96, F96, G96, A96, Bb96, C97, D97, E97, F97, G97, A97, Bb97, C98, D98, E98, F98, G98, A98, Bb98, C99, D99, E99, F99, G99, A99, Bb99, C100, D100, E100, F100, G100, A100, Bb100, C101, D101, E101, F101, G101, A101, Bb101, C102, D102, E102, F102, G102, A102, Bb102, C103, D103, E103, F103, G103, A103, Bb103, C104, D104, E104, F104, G104, A104, Bb104, C105, D105, E105, F105, G105, A105, Bb105, C106, D106, E106, F106, G106, A106, Bb106, C107, D107, E107, F107, G107, A107, Bb107, C108, D108, E108, F108, G108, A108, Bb108, C109, D109, E109, F109, G109, A109, Bb109, C110, D110, E110, F110, G110, A110, Bb110, C111, D111, E111, F111, G111, A111, Bb111, C112, D112, E112, F112, G112, A112, Bb112, C113, D113, E113, F113, G113, A113, Bb113, C114, D114, E114, F114, G114, A114, Bb114, C115, D115, E115, F115, G115, A115, Bb115, C116, D116, E116, F116, G116, A116, Bb116, C117, D117, E117, F117, G117, A117, Bb117, C118, D118, E118, F118, G118, A118, Bb118, C119, D119, E119, F119, G119, A119, Bb119, C120, D120, E120, F120, G120, A120, Bb120, C121, D121, E121, F121, G121, A121, Bb121, C122, D122, E122, F122, G122, A122, Bb122, C123, D123, E123, F123, G123, A123, Bb123, C124, D124, E124, F124, G124, A124, Bb124, C125, D125, E125, F125, G125, A125, Bb125, C126, D126, E126, F126, G126, A126, Bb126, C127, D127, E127, F127, G127, A127, Bb127, C128, D128, E128, F128, G128, A128, Bb128, C129, D129, E129, F129, G129, A129, Bb129, C130, D130, E130, F130, G130, A130, Bb130, C131, D131, E131, F131, G131, A131, Bb131, C132, D132, E132, F132, G132, A132, Bb132, C133, D133, E133, F133, G133, A1

Musical notation for the bass line of 'The Rose Tree'. The key signature is one flat (B-flat), and the time signature is 4/4. The notation is written on a single staff with a bass clef. The melody consists of eighth and quarter notes, with some measures containing rests. The notes are: 28 (B-flat), 29 (B-flat), 30 (B-flat), 31 (B-flat), 32 (B-flat), 33 (B-flat), 34 (B-flat), 35 (B-flat), 36 (B-flat), 37 (B-flat), 38 (B-flat), 39 (B-flat), 40 (B-flat), 41 (B-flat), 42 (B-flat), 43 (B-flat), 44 (B-flat), 45 (B-flat), 46 (B-flat), 47 (B-flat), 48 (B-flat), 49 (B-flat), 50 (B-flat), 51 (B-flat), 52 (B-flat), 53 (B-flat), 54 (B-flat), 55 (B-flat), 56 (B-flat), 57 (B-flat), 58 (B-flat), 59 (B-flat), 60 (B-flat), 61 (B-flat), 62 (B-flat), 63 (B-flat), 64 (B-flat), 65 (B-flat), 66 (B-flat), 67 (B-flat), 68 (B-flat), 69 (B-flat), 70 (B-flat), 71 (B-flat), 72 (B-flat), 73 (B-flat), 74 (B-flat), 75 (B-flat), 76 (B-flat), 77 (B-flat), 78 (B-flat), 79 (B-flat), 80 (B-flat), 81 (B-flat), 82 (B-flat), 83 (B-flat), 84 (B-flat), 85 (B-flat), 86 (B-flat), 87 (B-flat), 88 (B-flat), 89 (B-flat), 90 (B-flat), 91 (B-flat), 92 (B-flat), 93 (B-flat), 94 (B-flat), 95 (B-flat), 96 (B-flat), 97 (B-flat), 98 (B-flat), 99 (B-flat), 100 (B-flat).

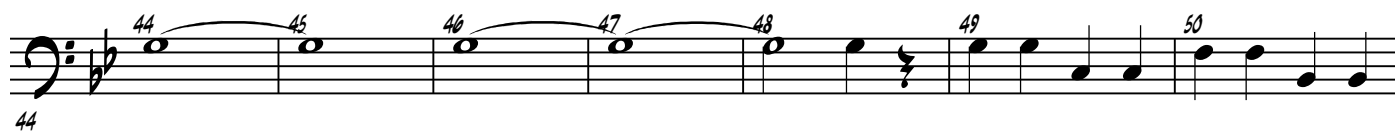
Measures 33-37 of the piece. Measure 33: Bass clef, key signature of one sharp (F#), quarter note F#4, quarter rest. Measure 34: Quarter notes G4, A4, B4, quarter rest. Measure 35: Quarter notes C5, B4, A4, quarter rest. Measure 36: Quarter notes G4, F#4, E4, quarter rest. Measure 37: Quarter notes D4, C4, B3, quarter rest.



Musical notation for the bass line of 'The Rose Tree'. The notation is on a single staff with a bass clef and a key signature of one flat (B-flat). The melody consists of the following notes: 38: B2, 39: B2, 40: B2, 41: B2, 42: B2, 43: B2. The notes are connected by a slur. The tempo is marked 'Allegretto' and the time signature is '3/4'.

## SPRING (FROM THE SEASONS)

F



G

